



## SÄFSEN RESORT - PRODUCT CATALOG 2025

### **A hidden gem in Sweden**

Nestled in the heart of Sweden's breathtaking wilderness, Säfsen Resort offers an unforgettable escape for nature lovers, adventure seekers, and families alike. Just a few hours from Stockholm, this charming destination provides year-round experiences—from skiing and snowmobiling in winter to hiking, biking, and canoeing in summer.

With comfortable accommodations, top-notch facilities, and a wide range of activities, Säfsen is the perfect choice for travelers looking to explore Sweden's unspoiled nature.

This catalog provides an overview of our key offerings for the summer and autumn period (June 1 - September 30), designed to meet the needs of travel agents and tour operators worldwide.



# 1 ACCOMODATION

We offer a range of comfortable lodging options, from cozy cabins to fully equipped apartments, suitable for families, groups, and solo travelers.



- Cabins – Traditional Swedish-style cabins with modern amenities. Nestled in the scenic environment our traditional Swedish-style log cabins offer a warm retreat with a fireplace in every cabin—many also featuring a private sauna for ultimate relaxation.
- Apartments – Stay close to the action in our modern apartments, perfectly located by the ski area. With spacious layouts and easy access to outdoor adventures, they're ideal for active families.

# 2 EXPERIENCES & ACTIVITIES

Säfsen Resort provides a variety of activities, ensuring an unforgettable stay for every visitor during the summer and autumn seasons.

- NEW Moose & Wilderness Safari
- Hiking and trail running in scenic landscapes
- Mountain biking on well-maintained trails
- Canoeing, fishing, and paddleboarding on Lake Säfsen
- NEW Self-guided sauna experience (part of the 'Skogslugn' concept)
- NEW Skogslugn – a unique forest retreat experience
- NEW Packrafting – explore lakes and rivers with lightweight, portable rafts
- NEW Eld by Light My Fire – Learn how to make fire in the forest using different types of tinder

Give your clients the perfect base for their Scandinavian adventure - where comfort meets the great outdoors!



## 3 DINING & LOCAL CUISINE

Our dining options emphasize fresh, locally sourced ingredients, offering a taste of Swedish culinary traditions.

- Restaurant Björnen
- Café with homemade sandwiches, pastries and coffee
- BBQ areas and self-catering options available

## 4 ACCESSIBILITY & TRANSPORTATION

Säfsen Resort is easily accessible from major cities and international airports:

- 3-hour drive from Stockholm Arlanda Airport
- Train connections to Ludvika station (1-hour drive from Säfsen)

## 5 BOOKING & PARTNERSHIPS

We collaborate with travel agents and tour operators worldwide to create seamless booking experiences.

- Competitive commission rates
- Customizable packages for groups and FIT (Free Independent Travelers)
- Marketing support and promotional materials available

For inquiries, collaboration opportunities and booking details, please contact:

**Anke Bakker**

Travel Trade

Email: [anke.bakker@safsen.se](mailto:anke.bakker@safsen.se)

Phone: +46 70-417 24 69

**Christoffer Tilstam**

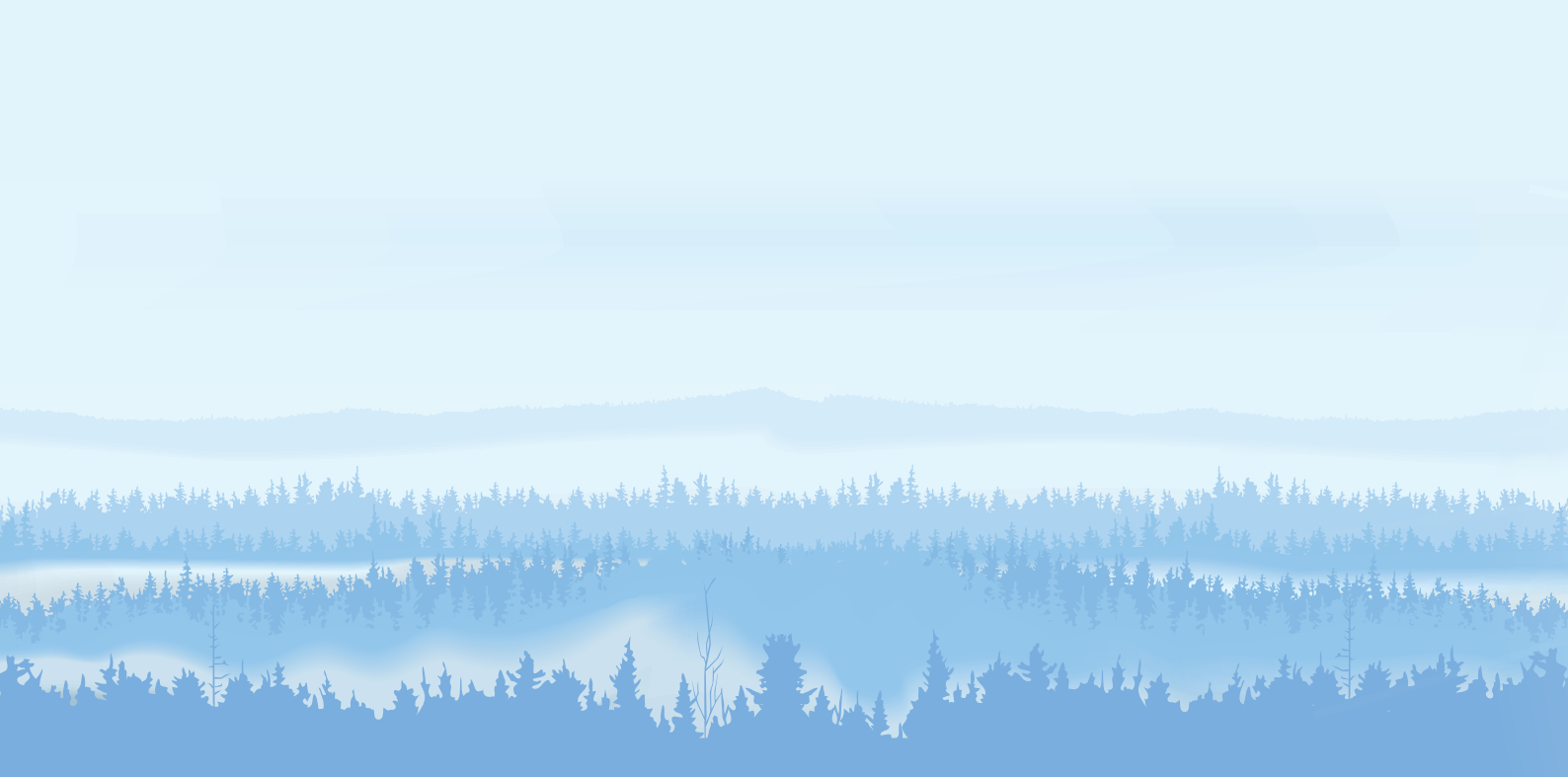
Sales and Marketing manager

Email: [christoffer.tilstam@safsen.se](mailto:christoffer.tilstam@safsen.se)

Phone: +46 70-417 06 72

Website: [www.safsen.se/for-professionals](http://www.safsen.se/for-professionals)

We look forward to welcoming your clients to an unforgettable summer and autumn experience at Säfsen Resort!



# BJÖRNEN ACTIVITY CENTER

Welcome to Björnen Activity Center, the heart of outdoor experiences at Säfsen Resort! Whether you're looking for thrilling adventures or peaceful moments in nature, our center is the perfect starting point for your journey.

**Equipment Rental & Expert Advice** At Björnen Activity Center, we offer a wide range of high-quality equipment to enhance your outdoor experience:

- **Mountain bikes** for thrilling rides on scenic trails
- **Canoes, kayaks, and rowboats** to explore Säfsen's beautiful lakes and rivers
- **Hiking gear and recommendations** to help you discover the most stunning trails

Our knowledgeable staff is always ready to provide expert tips on the best hiking and biking routes, scenic spots for open-fire cooking, and much more. Whether you're a beginner or an experienced outdoor enthusiast, we're here to help you make the most of your adventure.

**Guided Activities & Excursions** For those who want a more immersive experience, we offer a variety of guided activities, including:

- Guided hiking and biking tours to explore Säfsen's breathtaking landscapes
- Canoeing and kayaking excursions for an unforgettable time on the water
- Wilderness experiences that include campfire cooking and survival skills

A Cozy Spot to Recharge After an exciting day outdoors, relax and refuel at our cozy café and restaurant.

We serve:

- Light meals and sandwiches made with fresh ingredients
- "Fika" and refreshments, including coffee, tea, and delicious pastries.

Outdoor seating available to enjoy your meal with a view

**Säfsen Bike Arena** Just outside Björnen, you'll find **Säfsen's Bike Arena**, a favorite among both young and old, from beginners to more advanced cyclists. Whether you're looking to improve your skills or simply have fun, this arena offers a great biking experience for everyone.

## Opening hours Björnen summer 2025

May 29 - June 22: thursday to sunday

June 23 - August 31: every day

September 1 - September 28: thursday to sunday



# SÄFSEN ADVENTURE PASS - INCLUDED IN ACCOMODATION



## Discover Säfsen's Stunning Nature

Säfsen Resort offers a breathtaking natural landscape, perfect for outdoor enthusiasts. With the **Adventure Pass**, guests gain access to Säfsen's extensive network of hiking trails, MTB, and the bike arena, ensuring a thrilling and immersive experience in nature.

## What's Included?

- **Hiking Trails** – Explore scenic trails ranging from easy walks to challenging routes, all surrounded by the serene beauty of Swedish nature.
- **MTB** – Ride through well-maintained mountain biking trails, suitable for all levels, from beginners to experienced riders.
- **Bike Arena** – Test your skills in the dedicated cycling area, designed for technique training and fun challenges.

## Additional Services at Björnen Activity Center

- Get expert advice and guidance on the best biking, hiking, and paddling routes.
- Rent top-quality outdoor equipment, including bikes, kayaks, and hiking gear.

## Why Choose the Adventure Pass?

- Unlimited access to Säfsen's outdoor adventure facilities
- A variety of trails suited for different skill levels
- Family-friendly and adventure-packed experience
- Enjoy Sweden's stunning wilderness at your own pace

Experience the best of Säfsen's nature with the Adventure Pass – your gateway to an unforgettable outdoor adventure!



# SKOGLUGN - A UNIQUE FOREST RETREAT EXPERIENCE



## Find Peace in Nature

Skogslugn at Säfsen Resort offers a serene and rejuvenating escape into the heart of Swedish nature. This unique experience invites guests to slow down, reconnect with nature, and embrace tranquility through a self-guided retreat.

## What's Included?

- **Hammock and tarp loan** – Enjoy added comfort and shelter during your retreat.
- **Secluded forest locations** – Experience undisturbed silence in handpicked peaceful spots.
- **Self-guided mindfulness activities** – Enjoy meditative walks, guided breathing exercises, and reflective journaling.
- **Outdoor relaxation zones** – Unwind in hammocks, wooden loungers, and nature-inspired rest areas.
- **Organic refreshments** – Nourish yourself with locally sourced herbal teas and light snacks.

## Experience Details

- **Duration:** Available 3 hours
- **Difficulty Level:** Easy – suitable for all fitness levels.
- **Price:** 495 SEK (1-2p)
- **Commission** 20%
- **Group Size:** Ideal for individuals, couples, or small groups.
- **Requirements:** None
- **Period:** 1st of June – 30th of September
- **Tour date & time:** Monday – Sunday 9am, 1pm, 5pm

## Why Choose Skogslugn?

- A digital detox for true relaxation
- Immersive experience in pristine nature
- No prior experience needed – just a willingness to disconnect and unwind
- Suitable for individuals, couples, or small groups

Let nature restore your balance with Skogslugn – your personal retreat in the Swedish wilderness.

# SELF-GUIDED SAUNA ADVENTURE



## A Tranquil Escape to Nature

Experience the serenity of Säfsen's wilderness with our **Self-Guided Sauna Adventure**. This unique adventure allows you to unwind in a secluded sauna on a private island, accessible only by canoe or boat. Embrace the peaceful atmosphere and let nature work its magic.

## What's Included?

- **Canoe Rental** – Paddle your way to the sauna island, enjoying the beauty of the surrounding waters. 1-2 canoes/rowboat and life vests are included.
- **Private Sauna Access** – Relax in a traditional wood-fired sauna with stunning lakeside views.
- **Outdoor Rest Areas** – Comfortable seating, wooden decks, and scenic spots for ultimate relaxation.
- **Sauna Instructions & Firewood** – Receive detailed guidance on how to light and enjoy the sauna. Firewood is provided on-site. If you're unsure about your fire-making skills, we recommend booking the guided tour **Eld by Light My Fire** first.

## Experience Details

- **Duration:** 3 hours
- **Difficulty Level:** Easy – suitable for all fitness levels.
- **Price:** 1995 SEK per group (1-5p), Extra canoes/rowboat 330:- SEK
- **Commission** 20%
- **Group Size:** Suitable for individuals, couples, or small groups up to 5 person.
- **Requirements:** Basic paddle & swimming skills
- **Period:** 1st of June – 30th of September
- **Tour date & time:** Monday – Sunday 10 am, 1 pm & 4 pm

## Why Choose the Self-Guided Sauna Adventure?

- A unique way to connect with nature and unwind
- A peaceful retreat away from crowds
- No prior experience needed – instructions provided
- Perfect for relaxation and digital detox

Escape to nature and rejuvenate with the **Self-Guided Sauna Adventure** – a truly unforgettable adventure in the Swedish wilderness.

# MOOSE AND WILDERNESS SAFARI



## Experience the Untamed Beauty of Swedish Nature

Join our guided **Wilderness Safari** and explore the pristine forests of Finnmarken in Säfsen. This immersive adventure with Eoadventures takes you deep into the heart of Sweden's wilderness, where you'll discover the region's rich wildlife, breathtaking landscapes, and cultural heritage.

### What's Included?

- **Expert Guided Tour** – Explore the untouched nature of Finnmarken with a knowledgeable guide.
- **Wildlife Spotting** – Look for moose, deer, and other native animals in their natural habitat.
- **Cultural Insights** – Learn about the history and traditions of the Finnmarken region.
- **Scenic Landscapes** – Experience the beauty of dense forests, rolling hills, and tranquil lakes.
- **Local Snacks & Refreshments** – Enjoy a traditional outdoor fika in a scenic location.

### Experience Details

- **Duration:** Approximately 4 hours, starting at 18:00 (6 pm) in the evening.
- **Difficulty Level:** Easy – suitable for all ages and fitness levels.
- **Price:** 1495 SEK per person. Kids 7-14 years 1045 SEK.
- **Commission** 15%
- **Group Size:** Small group up to 6 people for a more personal and immersive adventure.
- **Requirements:** None
- **Period:** 26th of June – 27th of August
- **Tour date & time:** Tuesdays 6pm and Wednesdays 6pm

### Why Choose the Wilderness Safari?

- A chance to see Sweden's wildlife in its natural environment.
- Guided by local nature experts passionate about conservation.
- A perfect mix of adventure, culture, and relaxation in nature.
- Ideal for nature lovers, photographers, and those seeking a unique outdoor experience.

*"We will be on the lookout for wild animals, but as they roam freely in their natural habitat, sightings cannot be guaranteed. However, our experienced guides will do their utmost to maximize your chances of spotting them."*



# WILDERNESS PACKRAFTING EXPERIENCE



## Explore Sweden's Remote Waterways

Embark on an unforgettable journey with the **Wilderness Packrafting Experience**. This guided adventure takes you through untouched lakes and winding rivers, offering an immersive experience in the heart of Swedish nature.

### What's Included?

- **Expert Guided Tour** – Led by professional guides with extensive knowledge of the area.
- **Packraft & Gear Rental** – High-quality packrafts, paddles, dry bags, and safety equipment.
- **Scenic Waterways** – Explore remote lakes and rivers with stunning natural surroundings.
- **Wildlife Encounters** – Opportunity to spot moose, beavers, and a variety of bird species.
- **Outdoor Fika** – Enjoy a traditional Swedish outdoor coffee break with snacks in nature.

### Experience Details

- **Duration:** Approximately 3 hours.
- **Difficulty Level:** Moderate – requires basic paddling skills and a moderate fitness level.
- **Price:** 1250 SEK per person.
- **Commission** 15%
- **Group Size:** Small group up to 6 people for a more personal and immersive adventure.
- **Requirements:** Basic paddling & swimming skills
- **Period:** 27th of June – 27th of August
- **Tour date & time:** Wednesdays 10 am

### Why Choose the Wilderness Packrafting Experience?

- A unique way to explore Sweden's wild waterways.
- Learn essential packrafting techniques from expert guides.
- A perfect mix of adventure, wildlife, and relaxation in nature.
- Ideal for outdoor enthusiasts, photographers, and nature lovers.

Paddle your way into the wilderness with the Wilderness Packrafting Experience – a truly unforgettable adventure on Sweden's remote waters.

# ELD BY LIGHT MY FIRE - GUIDED FIRE MAKING EXPERIENCE



## Master the Art of Fire-Making in Nature

Join us for an engaging and educational outdoor experience where you will learn the essential skills of making fire in the wild. The **Eld by Light My Fire** guided tour will teach you traditional and modern fire-lighting techniques, helping you to develop confidence and self-reliance in the great outdoors.

## What's Included?

- **Expert Instruction** – Learn fire-making methods from experienced outdoor guides.
- **Traditional & Modern Techniques** – Use flint and steel, natural tinders, and modern fire-starting tools.
- **Hands-On Practice** – Build, light, and maintain your own fire safely.
- **Survival Skills** – Understand fire safety, wind conditions, and best practices in different weather conditions.
- **Outdoor Fika** – Enjoy a traditional Swedish coffee break with snacks around the fire.

## Experience Details

- **Duration:** Approximately 3 hours.
- **Difficulty Level:** Easy – suitable for beginners and all skill levels.
- **Price:** 950 SEK per person. Kids 7-14 years 665 SEK.
- **Commission** 15%
- **Group Size:** Small group up to 8 people to experience a more personal and interactive learning session.
- **Requirements:** None
- **Period:** 26th of June – 28th of August
- **Tour date & time:** Tuesdays 10 am and Thursdays 10 am

## Why Choose Eld by Light My Fire?

- Develop practical outdoor survival skills.
- Experience the satisfaction of making fire using natural materials.
- Connect with nature in a meaningful and hands-on way.
- Ideal for outdoor enthusiasts, bushcraft lovers, and families.

Discover the ancient skill of fire-making and enjoy a unique outdoor experience with **Eld by Light My Fire**.

# ADVENTURE MINE TOURS



**Step into Sweden's Mining Heritage** AdventureMine is a historical and adventure-filled attraction that takes visitors deep underground to explore Sweden's mining past. Located in an authentic mine, it offers a range of guided tours that showcase the history, challenges, and culture of Swedish mining life.

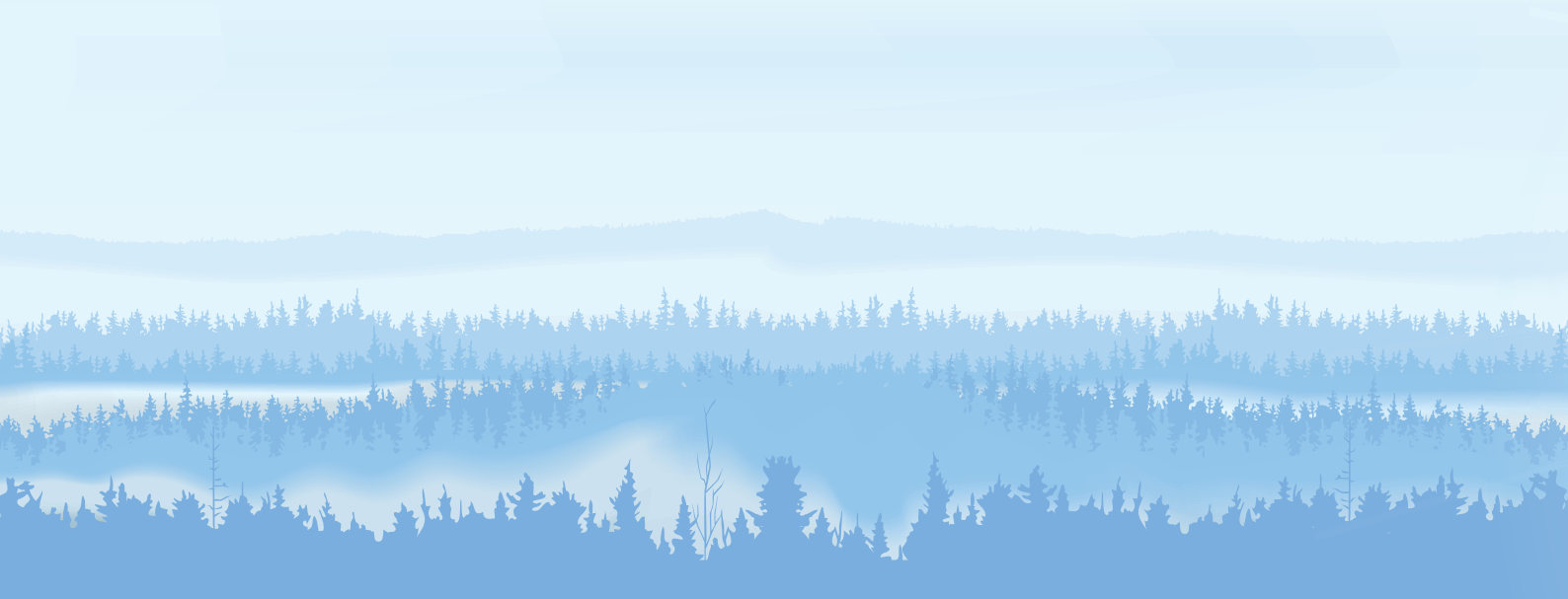
## Explore the Depths of History and Adventure

Join Adventuremine for an unforgettable underground experience. Whether you're looking for a family-friendly excursion, a thrilling underground challenge, or a unique sauna ritual, we have the perfect adventure for you.

### 1. Familjeturen - The Family Tour

A fun and educational guided tour designed for all ages. Learn about the history of the mine, hear fascinating stories, and explore underground tunnels in a safe and exciting way.

- **Duration:** Approximately 2 hours
- **Difficulty Level:** Easy – suitable for families and children
- **Price:** 495 SEK per adult, 345 SEK per child (under 14)
- **Commission** 10%
- **Requirements:** Maximum weight 120 kg, from age 6 years
- **Includes:** Helmets, headlamps, fika and guided storytelling
- **Period:** 19th of June – 28th of August
- **Tour dates & time:** Thursdays, 11.00 am



## 2. Äventyrsturen - The Adventure Tour

For those seeking an adrenaline-filled experience, this tour takes you deeper into the mine. Navigate narrow passageways, climb ladders, and experience the thrill of true underground exploration.

- **Duration:** Approximately 4 hours
- **Difficulty Level:** Moderate to challenging – suitable for adventure seekers
- **Price:** 1195 SEK per adult, 795 SEK per child (under 14)
- **Commission** 10%
- **Requirements:** Minimum weight 36 kg, maximum weight 120 kg
- **Includes:** Helmets, headlamps, safety gear, and expert guidance
- **Period:** 23rd of June – 31st of August
- **Tour dates & time:** Monday – Saturday 9 am & 2 pm, Sundays 9 am

## 3. Gruvfruns Basturitual - The Lady of the mine Sauna Ritual

A one-of-a-kind wellness experience deep inside the mine. Relax in a mystical underground sauna and follow an ancient ritual inspired by mining folklore.

- **Duration:** Approximately 4 hours
- **Difficulty Level:** Easy – a relaxing and cultural experience
- **Price:** 2450 SEK per person
- **Commission** 10%
- **Requirements:** Maximum weight 120 kg
- **Includes:** Sauna access, ritual instructions, essential oil infusions, A local cheese and charcuterie platter, local beverage and guided relaxation
- **Period:** 3rd of July – 2nd of August
- **Tour dates & time:** Thursdays 2.30 pm, Fridays 11 am, Saturdays 2.30 pm

## Why Choose AdventureMine?

- Unique and immersive underground experiences
- Expert guides ensuring safety and storytelling
- A perfect mix of history, adventure, and relaxation

## Getting There

AdventureMine is accessible by car, and the journey takes approximately 50 minutes from Säfsen Resort. Visitors travel independently to the site, ensuring flexibility in their schedule. On the way back, we highly recommend a stop at **Grangärde Musteri** to stock up on local delicacies and enjoy a taste of the region.

Embark on a journey beneath the surface with **AdventureMine** – where history and adventure meet.



# SUMMER 2026



With summer 2026 on the horizon, we are more excited than ever about what's to come at Säfsen! After summer 2025, we're aiming even higher - more activities, new experiences, and most importantly, the grand opening of our brand-new main building. **Hyttan** will be fully operational from Christmas 2025.

Hyttan will once again be the heart of Säfsen during the summer, offering an enhanced guest experience with new facilities, dining options, and gathering spaces designed for comfort and adventure.

# PRICE LIST FOR RENTAL PRODUCTS

Product	1 day	2 days	3 days	4 days	5-7 days
MTB Full-Suspension Electric, S-XL	750	1050	1250	1450	1650
MTB Full-Suspension, S-XL	690	990	1190	1390	1590
MTB, S-XL	550	800	1000	1200	1400
MTB, 24"-26"	330	610	830	990	1100
MTB, 14"-20"	280	505	660	770	880
Balance bike	220	280	330	390	440
Bike trailer	330	500	720	830	880
Kayak 1-person	430	500	770	880	940
Kayak 2-person	490	550	830	940	990
Canoe 2-person	430	500	770	880	940
Canoe 4-person	490	550	830	940	990
Stand up paddle	430	500	770	880	940
Rowboat	490	550	830	940	990

Prices in SEK.

## Experience Details for biking

- **Duration:** Optional (1-7 days)
- **Difficulty Level:** Easy – moderate depending on choice of trail
- **Commission** 10%
- **Requirements:** Basic biking skills
- **Period:** 29th of may – 28th of september
- **Tour date & time:** Available all day
- **Information upon booking:** Type of bike, length, weight, and age
- **Safety:** Helmet is included in the rental

## Experience Details for watercraft

- **Duration:** Optional (1-7 days)
- **Difficulty Level:** Easy – requires basic paddling skills and fitness level
- **Commission** 10%
- **Requirements:** Basic paddling & swimming skills
- **Period:** 29th of may – 28th of september
- **Tour date & time:** Available all day
- **Safety:** Life jacket is included in the rental



# CANCELLATION TERMS

## **Cancellation of accomodation**

A cancellation means termination of the Travel Agreement, in witch event the following applies:

1. For cancellations up to 31 days before the day of arrival: full refund
2. For cancellations from the 30th day to the 7th day before the day of arrival: 50% of net price
3. For cancellations from the 7th day: no refund

## **Cancellation of activities and rental equipment**

1. For cancellations up to 4 days before the day of arrival: full refund
2. For cancellations from the 4rd day: no refund

## **Cancellation of Adventure mine**

1. Cancellations made 30 days before the tour departure will not be charged.
2. Cancellations made 29 to 15 days before arrival will incur a cancellation fee of 50% of the total amount for the booked tour.
3. Cancellations made 14 days before the tour departure will result in the full amount being charged by the subcontractor.
4. The principal makes all cancellations via email. (The subcontractor confirms the cancellation via email.)
5. The supplier has the right to modify existing bookings or inquiries without any fees, provided that the changes are made more than 29 days before the customer's arrival. After that, the cancellation policy applies.



# SÄFSEN IS A PROUD MEMBER OF...



## **Outdoor Qualified**

We are proud to have been certified within Visit Dalarna's prestigious Outdoor Qualified concept. This means that we are especially suited for outdoor activities and have extensive experience in welcoming cyclists and MTB enthusiasts.



## **Naturturismföretagen**

Naturturismföretagen is the industry organization and the collective voice for businesses within nature tourism and ecotourism in Sweden. They work to improve conditions for running nature-based tourism and to promote the sustainable development of the industry.



## **Biking Dalarna**

Biking Dalarna brings together some of Sweden's best cycling trails and areas. With a unified trail marking system, trail grading, and excellent surrounding services, high-quality cycling experiences await.



## **Visita**

Visita is the industry and employer organization for the Swedish hospitality sector. Visita negotiates the industry's collective agreements.



## **Svenska Skidanläggningars Organisation**

As members of SLAO, we work proactively with safety measures in and around lifts and slopes.